



APS - automated power station



Specifications

Base System includes:

- WhisperGen™ PPS16 - 12/24LD
- 100Ah @ 24V or 200Ah @ 12V battery bank
- 1500W 230V Inverter
- Diesel tank (20L)
- Ready to be plumbed into hot water cylinder
- Solar and or Wind-power ready
- Weather proof durable enclosure
- 12V or 24V

Options:

- Integrated 45L hot water cylinder
- Larger cylinder available on request
- Larger battery banks (up to 450Ah @ 24V & 900Ah @ 12V
- 2500W or 5000W inverter
- Larger diesel tanks
- Two WhisperGen™ PPS16 - 12/24LD fitted in one enclosure with battery bank and hot water cylinder in separate enclosure
- Full custom design/build options available

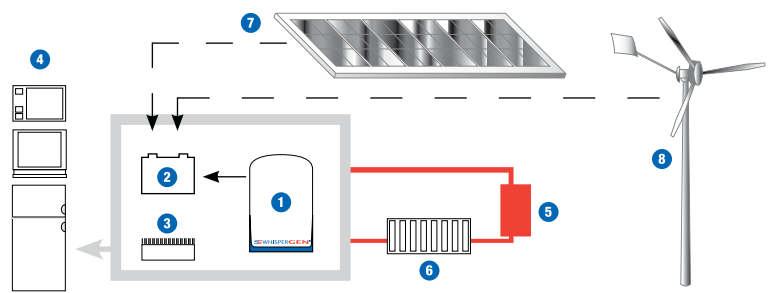
you can relax, it's a

WhisperGen™ automated power station

The WhisperGen™ automated power station is a fully independent 12 or 24V diesel-powered heat and power system. An integrated, transportable 'plug and play' system designed for domestic or commercial applications where an independent, on-demand power and heat solution is important.

Set-up ready to run on its own or in conjunction with solar and/or wind power it provides DC power to automatically charge the batteries that run your normal electrical appliances directly or through a DC/AC Inverter. The unit automatically provides hot water and space heating for a warm and dry environment.

Smaller, lighter and significantly quieter than traditional generators, the WhisperGen™ monitors battery and charge levels, utilizing a built-in, self-diagnostic system so that you can set it and forget it. All this plus superb design and robust construction, so you can just relax and enjoy the comforts of home wherever you may set-up with the WhisperGen™ automated power station.



- 1 WhisperGen™ off-grid heat and power system
- 2 Battery bank
- 3 DC/AC inverter
- 4 Standard domestic appliances
- 5 Hot water for domestic use
- 6 Space heating
- 7 Solar (optional)
- 8 Wind-power (optional)

- A Fibre glass enclosure
- B Burner
- C Stirling engine
- D Engine control unit
- E Burner fan
- F Control panel
- G Input connection for solar / wind-power



www.whispergen.com